



JUDICIARY OF GUAM
Administrative Office of the Courts



120 West OBrien Drive Hagatna Guam 96910
Tel: (671) 475-3544
Fax: (671) 477-3184

Katherine A. Maraman
Chief Justice

Alberto C. Lamorena III
Presiding Judge

John Q. Lizama
Administrator of the Courts

Gloria J. Long
Procurement & Fac. Mgt. Administrator

June 30, 2017

To: All Prospective Bidders

From: Administrator of the Courts

RE: **Amendment no. 1**
Ref: IFB 17-09 Route 4 Building Interior Demolition Services

Below are responses to the questions submitted to my office:

1. Since the building was made in the 70's, there is a possibility of Lead base paint and Asbestos present on the building. If that is the case, who will mitigate these hazardous materials.

Response: The building was most recently renovated from a restaurant to a cold storage unit in 1997. As with any construction job, if hazardous materials are identified the work will stop and the Judiciary will review the situation and develop a mitigation plan that conforms to all federal and local regulations. The Judiciary will determine who best to perform the work and compensate the vendor accordingly.

2. The power on the building will be turned off when the job is completed but who will apply for disconnection? Owner or Contractor?

Response: The power at the building is NOT to be turned off when the job is completed. Please see the attached informational drawings. The electrical/telecom panels and connecting conduit identified in the attached informational drawings shall not be removed. Electrical/telecom panels and conduit that are not shown on the attached drawings shall be removed. Existing water and waste lines shall remain in place.

3. Need to know the scope for the mechanical, are all air ducts and insulation will be removed or to remain?

Response: All Air Ducts and insulation will be removed. Bathrooms ceilings, light fixtures, and exhaust system components will be removed.

4. The main doors will be removed during the demolition or to be removed later upon completion?

Response: The large door at the cold storage unit exterior is to be removed. All other doors are to remain.

5. Does this project involve any hazardous materials, such as asbestos tiles, lead paint etc., which need to be removed and disposed of? If so, please inform the name of hazardous materials, location and quantities.

Response: See question 1 response.

6. Please inform and indicate which power panel box will stay "AS IS and WHERE IS"?

Response: Please see question 2 response. We have provided informational drawings to indicate which electrical and telecom panels ARE TO REMAIN.

7. Who will be responsible for disconnecting or turning off water?

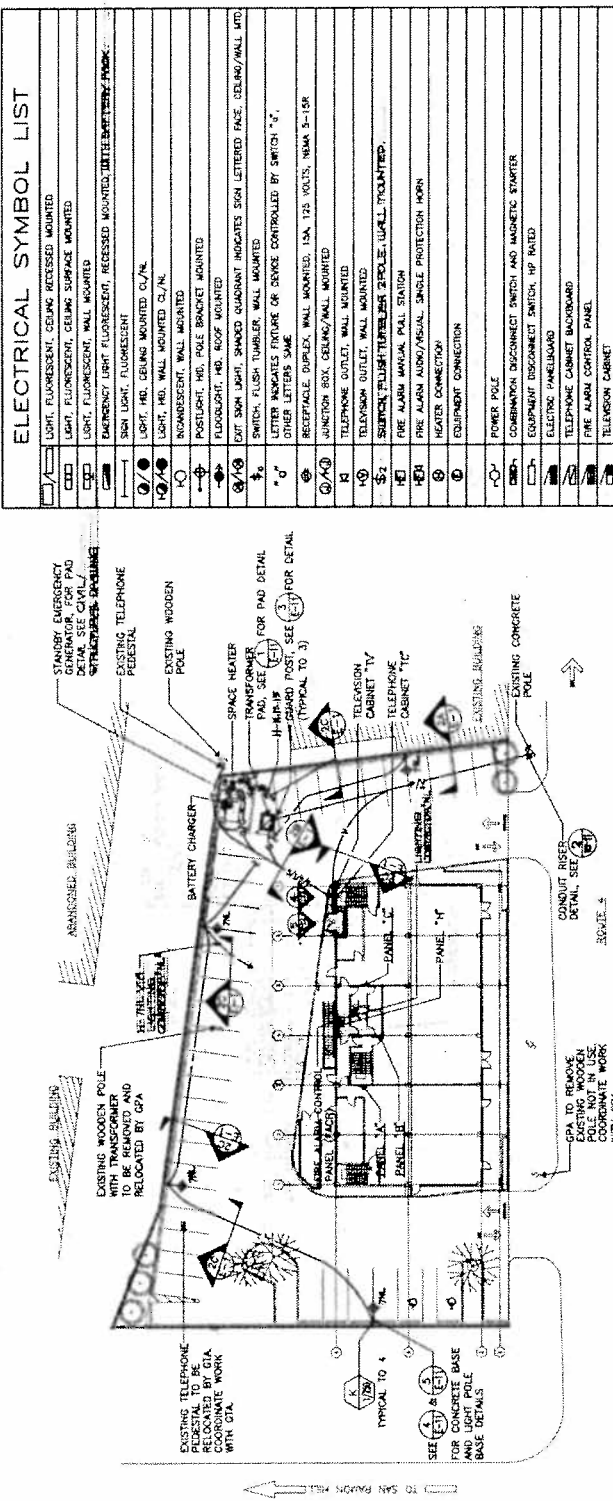
Response: The water will not be disconnected. All existing water and waste water lines are to remain in place. These are not to be damaged or removed.

If you have any questions please do not hesitate to contact the Procurement & Facilities Management Administrator Gloria J. Long at 475-3433/3175 or email glong@guamcourts.org and/or mantonio@guamcourts.org.


JOHN Q. LIZAMA

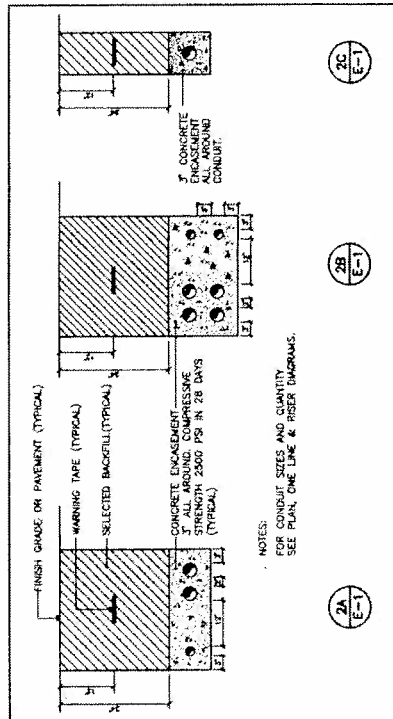
cc: P&FMA
IFB File

Attachment: Electrical Drawings



1 ELECTRICAL SITE PLAN
SCALE: 1"=20'

- GENERAL NOTES:**
- 1) COORDINATION MUST BE MADE WITH GPA FORTY (40) DAYS IN ADVANCE FOR INSPECTION ON TRENCH WORK, BEFORE AND AFTER LAYING OF DUCTS, PLACEMENT OF CONCRETE ENCASUREMENT, AND BACKFILLING.
 - 2) ALL DUCTS SHALL BE CLEANED, PROVIDED WITH PULLWIRES AND CONCREDED BEFORE THE CABLES ARE PULLED.
 - 3) OWNER TO GRANT EASEMENT FOR THE LOCATION OF ROUTING OF THE POWER, LINE AND EQUIPMENT.
 - 4) APPLICATION FOR POWER SERVICE MUST BE SUBMITTED EIGHT MONTHS BEFORE SERVICE CONNECTION TO ALLOW FOR DELIVERY OF TRANSFORMER.



NOTES:
FOR CONDUIT SIZES AND QUANTITY
SEE PLAN, ONE LINE & RISER DIAGRAMS.

2 DUCT SECTION
SCALE: 1"=4"

ELECTRICAL SYMBOL LIST	
[Symbol]	LIGHT, FLUORESCENT, CEILING RECESSED MOUNTED
[Symbol]	LIGHT, FLUORESCENT, CEILING SURFACE MOUNTED
[Symbol]	LIGHT, FLUORESCENT, WALL MOUNTED
[Symbol]	EMERGENCY LIGHT FLUORESCENT, RECESSED MOUNTED, WITH BATTERY PACK
[Symbol]	SIGN LIGHT, FLUORESCENT
[Symbol]	LIGHT, HRI, CEILING MOUNTED CL/N
[Symbol]	LIGHT, HRI, WALL MOUNTED CL/N
[Symbol]	FLUORESCENT, WALL MOUNTED
[Symbol]	PANEL, HRI, POLE BRACKET MOUNTED
[Symbol]	FLOODLIGHT, HRI, ROOF MOUNTED
[Symbol]	EXIT SIGN LIGHT, SHARDED QUADRANT INDICATES SIGN LETTERED FACE, CEILING/WALL MTD.
[Symbol]	SWITCH, FLUSH TUMBLER, WALL MOUNTED
[Symbol]	LETTER INDICATES FEATURE OR DEVICE CONTROLLED BY SWITCH "1"
[Symbol]	OTHER LETTERS SAME
[Symbol]	RECEPTACLE, DUPLEX, WALL MOUNTED, 15A, 125 VOLTS, NEMA 5-15R
[Symbol]	JUNCTION BOX, CEILING/WALL MOUNTED
[Symbol]	TELEPHONE OUTLET, WALL MOUNTED
[Symbol]	TELEVISION OUTLET, WALL MOUNTED
[Symbol]	SWITCH, FLUSH TUMBLER, 2 POLE, WALL MOUNTED
[Symbol]	FIRE ALARM MANUAL PULL STATION
[Symbol]	FIRE ALARM AUDIBLE/VISUAL, SINGLE PROTECTION HORN
[Symbol]	HEADER CONNECTION
[Symbol]	EQUIPMENT CONNECTION
[Symbol]	POWER POLE
[Symbol]	COMBINATION DISCONNECT SWITCH AND MAGNETIC STARTER
[Symbol]	EQUIPMENT DISCONNECT SWITCH, 1/2" NATED
[Symbol]	ELECTRIC PANELBOARD
[Symbol]	FIRE ALARM CONTROL PANEL
[Symbol]	TELEVISION CABINET
[Symbol]	FLEXIBLE CONDUIT
[Symbol]	BACKWAY, CONCEALED BELOW FIN. FLOOR OR CEILING, 1/2" HATCH MARK INDICATES 3 WIRES WITHIN INCLUDING GROUND, HATCH MARKS INDICATE NUMBER OF WIRES WITHIN INCLUDING GROUND
[Symbol]	BACKWAY, CONCEALED IN CEILING OR WALL, NO HATCH MARK INDICATES 3 WIRES WITHIN INCLUDING GROUND, HATCH MARKS INDICATE NUMBER OF WIRES WITHIN INCLUDING GROUND
[Symbol]	BACKWAY, STURBED & CAPPED
[Symbol]	FIRE ALARM BACKWAY
[Symbol]	TELEPHONE BACKWAY
[Symbol]	TELEPHONE BACKWAY
[Symbol]	SECONDARY POWER BACKWAY
[Symbol]	GENERATOR POWER BACKWAY
[Symbol]	CONTROL BACKWAY
[Symbol]	ARROW, NUMBER TO CABINET OR PANEL, AS INDICATED, NO HATCH MARK INDICATES 3 WIRES WITHIN INCLUDING GROUND, HATCH MARKS INDICATE NUMBER OF WIRES WITHIN INCLUDING GROUND
[Symbol]	INDICATOR, DETAIL: TOP HALF-DETAIL NUMBER, BOTTOM HALF-DETAIL (HORIZONTAL LOCATION)
[Symbol]	INDICATOR, FEATURE: TOP HALF-FEATURE TYPE, BOTTOM HALF-NUMBER OF LAMPS AND WATTAGE
[Symbol]	INDICATOR, BACKWAY SECTION
[Symbol]	NOTE INDICATOR
[Symbol]	INDICATES WEATHERPROOF
[Symbol]	PROVISION FOR FUTURE BREAKER
[Symbol]	AMPERE FRAME (AMPERE TRIP)
[Symbol]	NON-POSSIBLE SWITCH
[Symbol]	NIGHT LIGHT/DUPLEX LIGHT
[Symbol]	NORMALLY OPEN/NORMALLY CLOSED
[Symbol]	N.I.C.
[Symbol]	NOT IN CONTRACT

REVISIONS	Date
No.	Description

TRISA
TRISIA ARCHITECTURAL & ENGINEERING
1000 W. 10TH STREET
DENVER, CO 80202
TEL: 303.733.1111
WWW.TRISIA.COM

Accredited
Member
Design

FUKUMITSU
AGANA SHOP

This
ELECTRICAL SITE PLAN,
DUCT SECTION &
SYMBOL LIST

Drawn: AM	Checked: VR	Scale: AS SHOWN
Supv: VR	Project No: 100000000	Project Name: 100000000
Project No: 100000000	Project Name: 100000000	Project Name: 100000000

REVISIONS	
No.	Description
1	AS SHOWN
2	AS SHOWN
3	AS SHOWN
4	AS SHOWN
5	AS SHOWN
6	AS SHOWN
7	AS SHOWN
8	AS SHOWN
9	AS SHOWN
10	AS SHOWN

TRSA
 Taniyoshi-Fuji-Smith
 Associates
 1000 W. 10th St., Suite 200
 Los Angeles, CA 90015
 (213) 488-1111

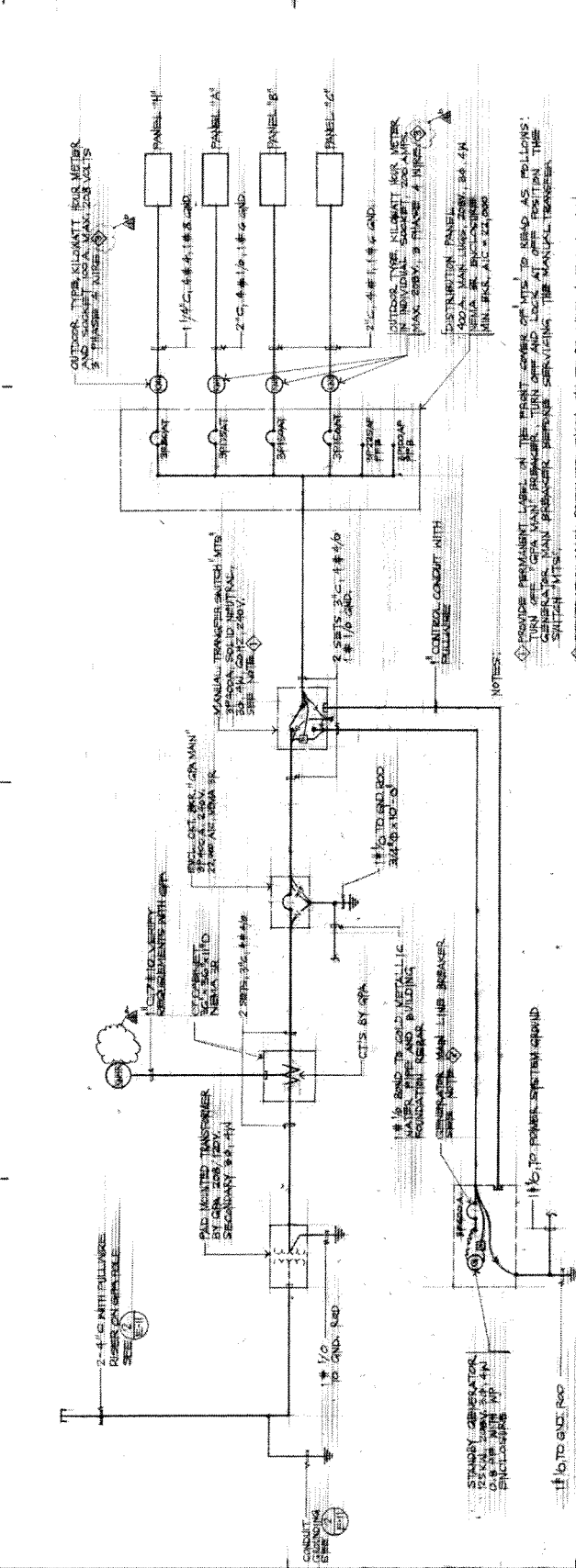
Architects
 Planning
 Interior Design

Project
**FUKUMITSU
 AGANA SHOP**

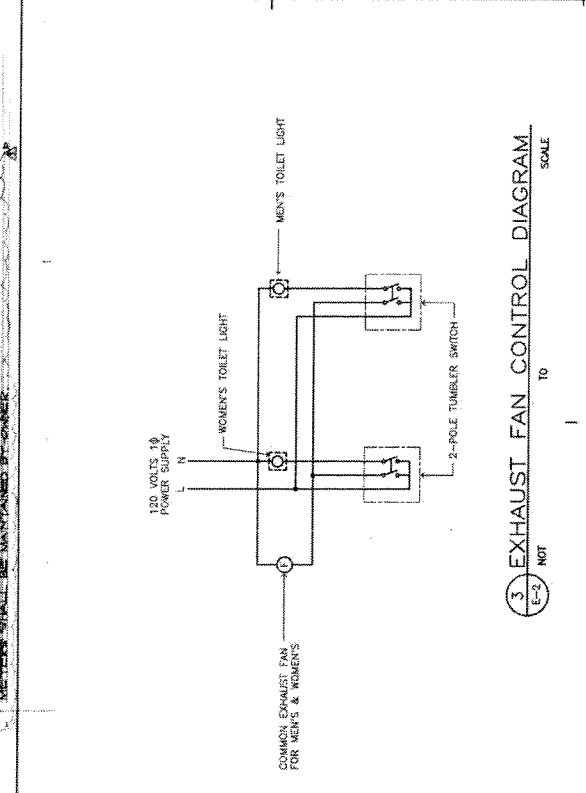


Project
**FUKUMITSU
 AGANA SHOP**

Title	
ONE LINE DIAGRAMS	
Designed:	RB
Drawn:	FSC
Checked:	VR
Supp.:	VR
Scale:	NONE
Date:	15 OCTOBER 1992
Project No.:	AGAGA/716
Drawing No.:	E-2



1. ONE LINE DIAGRAM SCALE TO NOT



2. LIGHTING CONTROL DIAGRAM SCALE TO NOT

3. EXHAUST FAN CONTROL DIAGRAM SCALE TO NOT

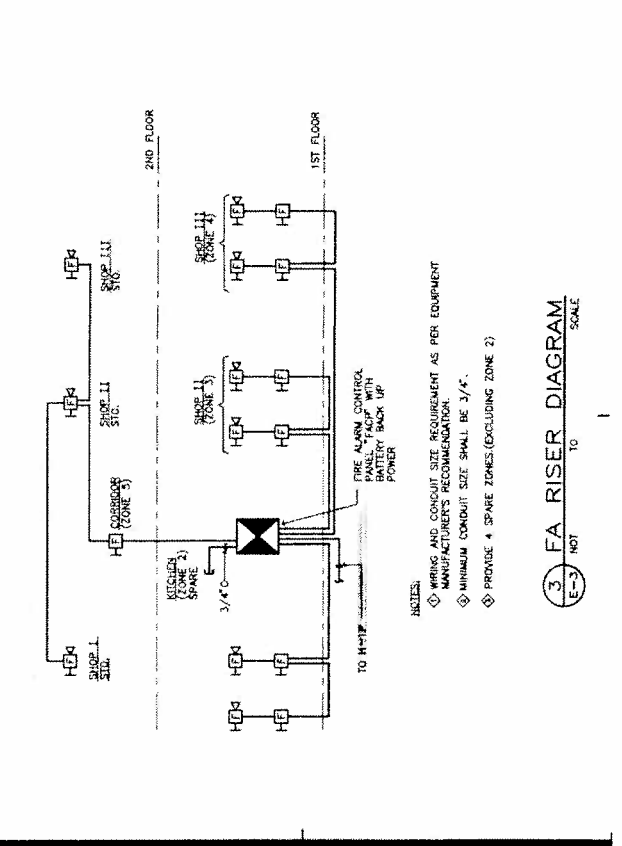
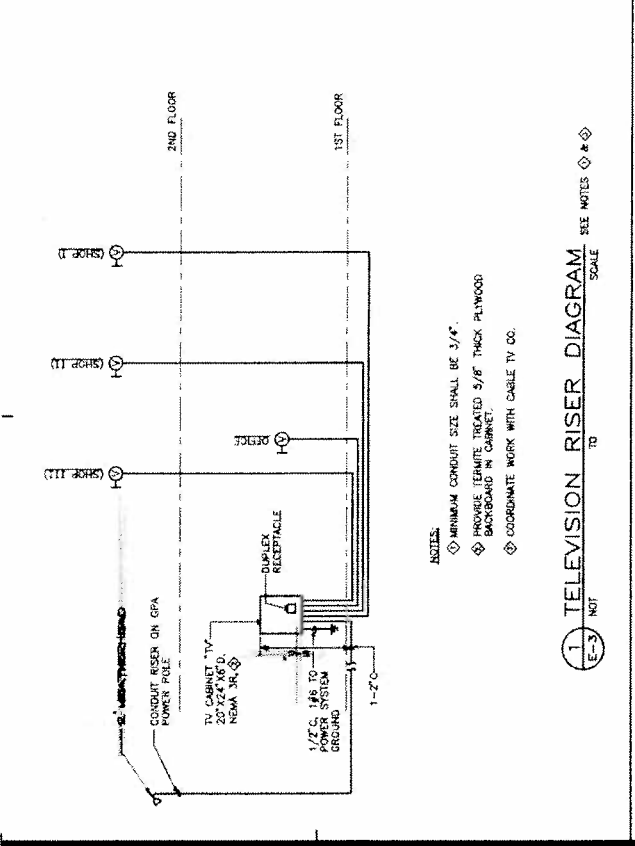
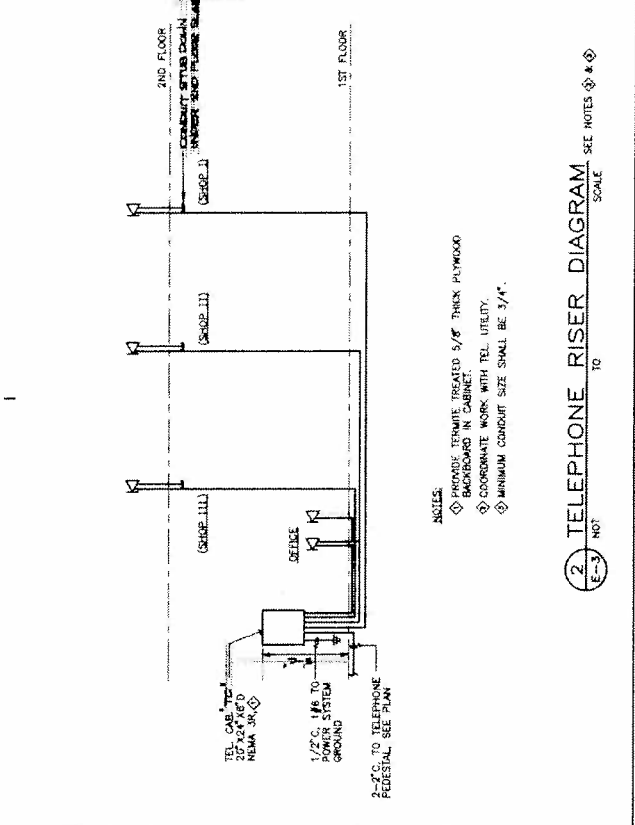
No.	Description	Date

TRSA
 Tenkouchi-Ruiz-Smith
 Associates
 Architects
 Planning
 Interior Design

BTL
 Project
 FUKUMITSU
 AGANA SHOP

Project
 FUKUMITSU
 AGANA SHOP

Title	RISER DIAGRAMS
Designed	RS
Drawn	RGS/FSC
Checked	VR
Sup'c	VR
Scale	NONE
Date	15 OCTOBER, 1972
Project No.	AUG800 Tm
Drawing No.	E-3



REVISIONS	
No.	Description

TRSIA
 T. R. Smith & Associates, Inc.
 1115 N. W. 10th Street
 Ft. Lauderdale, FL 33304
 Phone: (305) 555-1115
 Fax: (305) 555-1116
 Website: www.trsia.com

Architecture
 Planning
 Interior Design

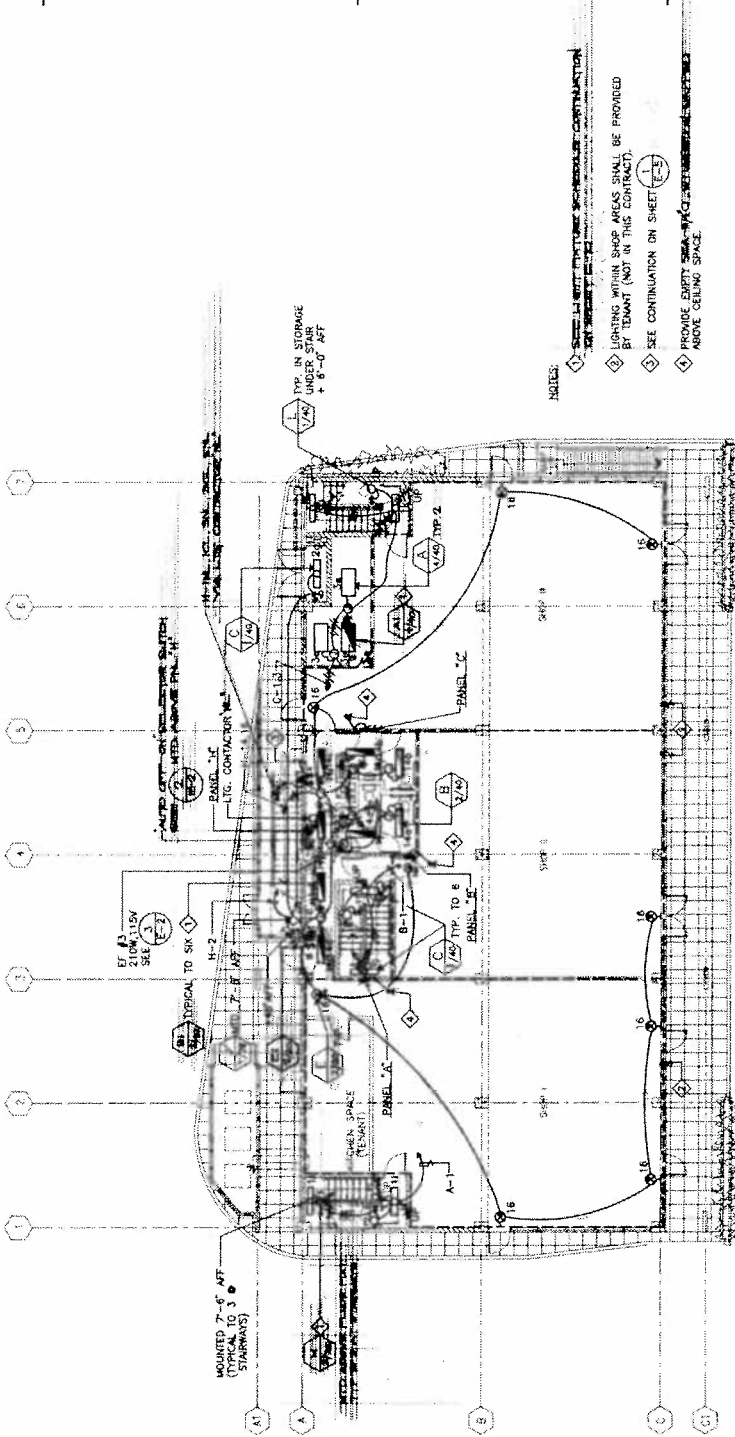
Project
**FUKUMITSU
 AGANA SHOP**



Title
FIRST FLOOR LIGHTING PLAN

Designed: NI
 Drawn: AH
 Checked: VR
 Supv: VR
 Scale: 1/8" = 1'-0"
 Date: 15 OCT. 1992
 Project No.: EPZ23201A
 Drawing No.: E-4

Sheet No. **E-4**

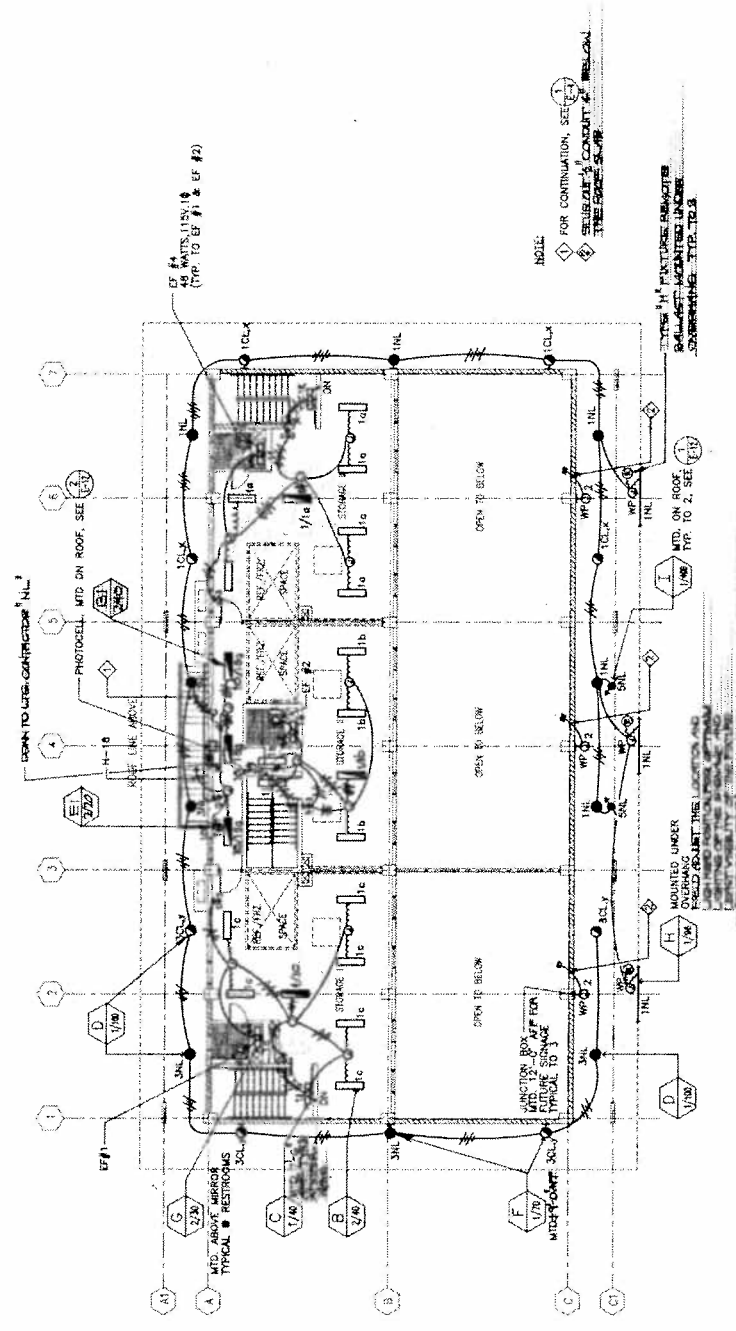


NOTES:
 1. SHALL VERIFY ALL SCHEMATIC CONSTRUCTION
 2. LIGHTING WITHIN SHOP AREAS SHALL BE PROVIDED BY TENANT (NOT IN THIS CONTRACT).
 3. SEE CONTINUATION ON SHEET E-3
 4. PROVIDE EMPTY SPACE ABOVE CEILING SPACE.

1 FIRST FLOOR LIGHTING PLAN
 E-4 SCALE: 1/8" = 1'-0"

REVISIONS		
No.	Description	Date

TRSiA TRINCHICK-RUTH-SMITH ASSOCIATES ARCHITECTS 1105 HARRISON STREET, SUITE 200 NEWTON, MASSACHUSETTS 02459		Architects Planner Interior Designer
EMS ELECTRICAL MECHANICAL SANITARY PROJECT ENGINEERS 1105 HARRISON STREET, SUITE 200 NEWTON, MASSACHUSETTS 02459		
Project: FUKUMITSU AGANA SHOP		
Title: MEZZANINE LIGHTING PLAN		
Designed:	RS/NE	
Drawn:	FSC	
Checked:	VR	
Supv.:	VR	
Scale:	1/8" = 1'-0"	
Date:	10/11/2008	
Project No.:	AGAG-02	
Drawing No.:	EP07/GES	
		Sheet No. E-5



1 SECOND FLOOR LIGHTING PLAN
 SCALE 1/8" = 1'-0"

REVISIONS	
No.	Date

TRSI/A
 Tri-Regional
 Electrical-Plumbing-Smith
 Associates
 225 North 1st Street, Suite 200
 St. Paul, MN 55101
 Tel: 612/291-9200
 Fax: 612/291-9201
 www.trsi.com

Architects
 Massey
 Hunter
 Design

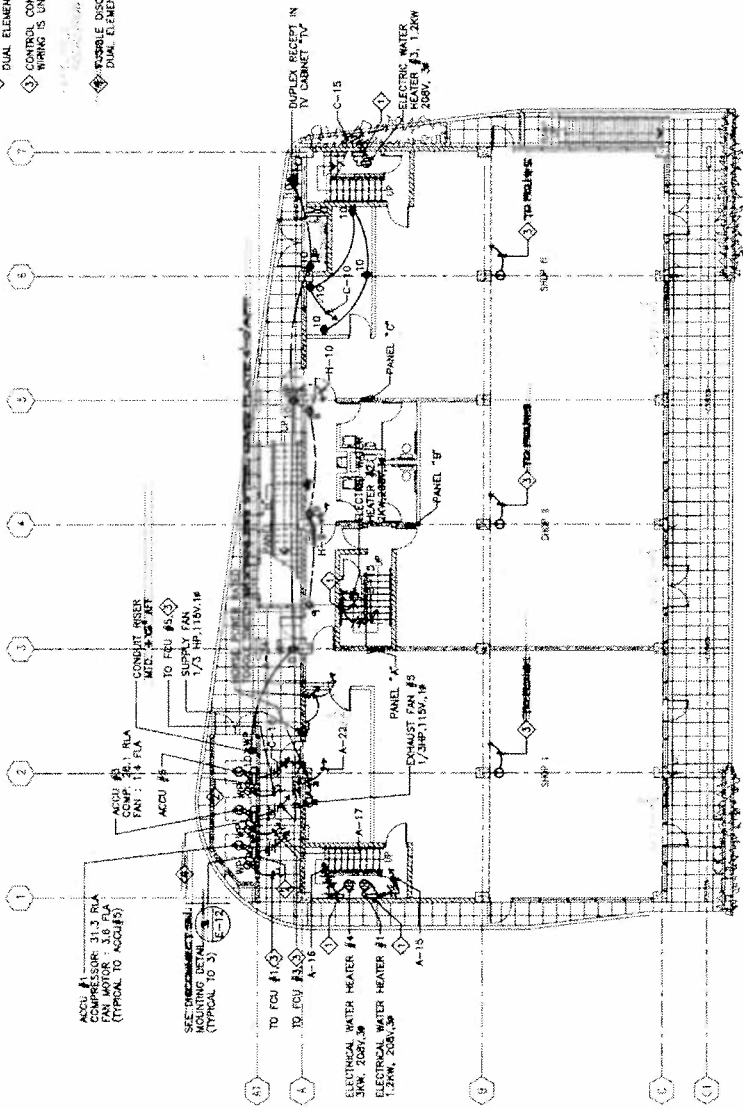


Project
**FUKUIMITSU
 ACANA SHOP**

Title
**FIRST FLOOR POWER
 PLAN**

Designed: RE/RS
 Drawn: AM
 Checked: VR
 Sup'v: VR
 Scale: 1/8"=1'-0"
 Project No.: 20020805
 Drawing No.:
E-6
 Sheet No.: 6

- NOTES:
- 1 PROVIDE NON FUSIBLE DISCONNECT SWITCH 3P/30AMPS, 240VOLTS, NEMA 1 ENCLOSURE.
 - 2 FUSIBLE DISCONNECT SWITCH 3P-60AMPS, 240 VOLTS WITH 50 AMPS. DUAL ELEMENT TIME DELAY FUSE IN NEMA 3R ENCLOSURE.
 - 3 CONTROL CONDUIT, VERIFY SIZE WITH EQUIPMENT MANUFACTURER. WIRING IS UNDER MECHANICAL SECTION.
 - 4 FUSIBLE DISCONNECT SWITCH 2P-60 AMPS, 240VOLTS, WITH 60 AMP DUAL ELEMENT TIME DELAY FUSE, IN NEMA 3R ENCLOSURE.



1 FIRST FLOOR POWER PLAN
 SCALE: 1/8"=1'-0"